



100
PER CENT

1862

PIONEERING SPIRIT

The aim: to offer the best. Always.

For over 150 years, STAHLWILLE has been pursuing one objective. Eduard Wille, the founder of the company, had a dream and made it reality – and his sons and grandchildren continued the tradition. His aim was to produce nothing but the best and manufacture the best conceivable tool quality. Well before others made the link, Eduard Wille realised that this can not be achieved with good ideas alone – a good team of workers is essential. It was for this reason that he invested so much in innovation, quality and people – and STAHLWILLE continues to do so today.

1890 – STAHLWILLE installs its first steam engine.

1862

PIONEERING SPIRIT

The aim: to offer the best. Always.

For over 150 years, STAHLWILLE has been pursuing one objective. Eduard Wille, the founder of the company, had a dream and made it reality – and his sons and grandchildren continued the tradition. His aim was to produce nothing but the best and manufacture the best conceivable tool quality. Well before others made the link, Eduard Wille realised that this can not be achieved with good ideas alone – a good team of workers is essential. It was for this reason that he invested so much in innovation, quality and people – and STAHLWILLE continues to do so today.

Innovative: right from the start.

The accuracy of STAHLWILLE handtools established the company as a force to be reckoned with on the continent. As early as 1914, STAHLWILLE employed well over 500 people in Wuppertal. Throughout Europe, companies involved in engineering, shipbuilding, the budding automotive industry, in sheet-metal working and forging shops relied on products produced by this company. The pioneering spirit of the founder is maintained to this day.



Capability in machining steel. For over 150 years.



List No 80 – the catalogue in 1909



Founder Eduard Wille

100 OUT OF EVERY 100 MADE IN GERMANY



Quality: more than just a word.

One of the most important constant features at STAHLWILLE is the quality. At STAHLWILLE, every single production step is in the hands of the company. Every part of the process chain is fine-honed for peak quality. Which is why you can find it embodied in every individual tool. The way it has always been.

About 870°C: the hardening furnace at the Wuppertal-Cronenberg factory.

100 OUT OF EVERY 100 MADE IN GERMANY



Loyalty to the location is part of our responsibility.

For decades, STAHLWILLE has contributed to making the »Made in Germany« seal a byword for excellent quality worldwide, because the company's commitment to quality is exceptionally high. Every single product has to exceed the requirements laid down in the standards. STAHLWILLE is one hundred per cent committed to Germany as a location: we develop and manufacture at three locations here – applying state-of-the-art processes, be it in forging, quality control or high-tech production of torque tools.



The company premises in the 1930s.



Manufactured in-house: precision tools & dies.

Quality: more than just a word.

One of the most important constant features at STAHLWILLE is the quality. At STAHLWILLE, every single production step is in the hands of the company. Every part of the process chain is fine-tuned for peak quality. Which is why you can find it embodied in every individual tool. The way it has always been.

By the way: STAHLWILLE was one of the first companies anywhere to be certified in 1990 in accordance with DIN EN ISO 9002, and in 1992 this was extended to include DIN EN ISO 9001. Extensive long-term testing and a continuous improvement process guarantee consistent quality throughout.

100%

THE ART OF THE ENGINEER

The measure of all things: customer benefit.

Technology is not an aim in itself and the art of engineering is never just art for art's sake. At STAHLWILLE we blend them with a particular aim in view: maximum benefit for the end user. This can include increased safety, better efficiency and improved work results, which is why STAHLWILLE does not simply develop tools of exceptional technical quality. STAHLWILLE develops innovative tool solutions. Comprehensive understanding of the customer and its processes are equally as indispensable as leading-edge technological know-how.



100%

THE ART OF THE ENGINEER

The measure of all things: customer benefit.

Technology is not an aim in itself and the art of engineering is never just art for art's sake. At STAHLWILLE we blend them with a particular aim in view: maximum benefit for the end user. This can include increased safety, better efficiency and improved work results, which is why STAHLWILLE does not simply develop tools of exceptional technical quality. STAHLWILLE develops innovative tool solutions. Comprehensive understanding of the customer and its processes are equally as indispensable as leading-edge technological know-how.



Always prepared to meet new challenges.

STAHLWILLE transforms innovation into customer benefit because end users are subject to ever-increasing requirements. Take torquing technology, for example. Many industries are seeing the introduction of new materials, such as carbon and plastics. Such materials require extremely low torques to be applied with consistent accuracy. At the same time, the need to document manufacturing steps is increasing. This, in turn, presumes special-purpose solutions – and STAHLWILLE is able to provide them, using state-of-the-art technology.

STAHLWILLE torque wrenches, for example, call on the art of engineering to unite a high-grade ergonomic design with outstanding accuracy and durability. These tools are also used in conjunction with specially developed software, enabling them to be configured with ease, and the results to be documented on a PC.



0.3 MILLIMETRES PRECISION WORKS

It's the details that make the difference.

A company making tools to uncompromising standards of accuracy has to keep a watchful eye on every detail of its development and production processes. Broaching tools used by STAHLWILLE produce the profiles for jaws and rings to within extremely tight tolerance ranges because they are so frequently checked. With a 22 mm open-jaw spanner, for example, the minimum dimension is 22.06 mm and the maximum is 22.36 mm. Leaving a tolerance range of only 0.3 mm. Which is why STAHLWILLE open-jaw and ring spanners fit so snugly over nuts and bolts to ensure safe working and prevent any damage to the fastener.

The same applies to product design. Here, STAHLWILLE blends the latest developments from the field of ergonomics with excellent physical properties. Tools & dies for the tools - all manufactured in-house - are created using the latest in computer technology. And state-of-the-art manufacturing processes enable adherence to our stringent manufacturing tolerances.



0.3 MILLIMETRES PRECISION WORKS

It's the details that make the difference.

A company making tools to uncompromising standards of accuracy has to keep a watchful eye on every detail of its development and production processes. Broaching tools used by STAHLWILLE produce the profiles for jaws and rings to within extremely tight tolerance ranges because they are so frequently checked. With a 22 mm open-jaw spanner, for example, the minimum dimension is 22.06 mm and the maximum is 22.36 mm. Leaving a tolerance range of only 0.3 mm. Which is why STAHLWILLE open-jaw and ring spanners fit so snugly over nuts and bolts to ensure safe working and prevent any damage to the fastener.

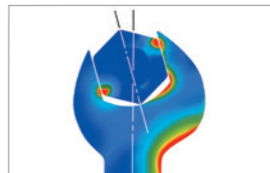
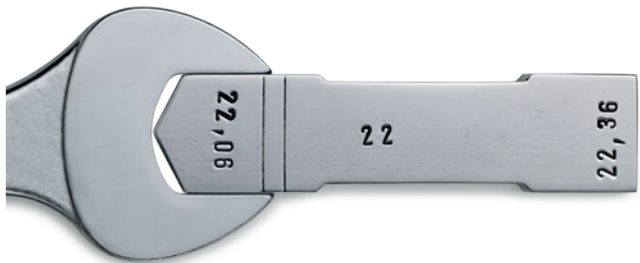
The same applies to product design. Here, STAHLWILLE blends the latest developments from the field of ergonomics with excellent physical properties. Tools & dies for the tools - all manufactured in-house - are created using the latest in computer technology. And state-of-the-art manufacturing processes enable adherence to our stringent manufacturing tolerances.



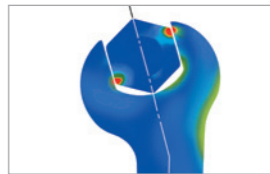
Safely apply every ounce of strength.

Thanks to their slim heads, thin-walled rings and jaws, combination spanners from STAHLWILLE enable the end user to work effectively and accurately even in confined spaces. The double-T profile used here is found exclusively in STAHLWILLE tools. This principle is well-known in steel construction and makes our tools that much more resilient to loads.

The angled head that is typical of STAHLWILLE spanners guarantees optimum distribution of loads. Thanks to the extremely close manufacturing tolerances, special alloys and STAHLWILLE's own AS-Drive (anti-slip drive), our tools handle fasteners firmly but with care.



Standard-quality spanners: high force applied to the transition between the jaw and the shaft (red) results in increased risk of breakage.



STAHLWILLE spanners: balanced distribution of forces improves stability and resistance to fracture.

3.5 BILLION RESPONSIBILITY



Safety first: an indispensable factor in air travel.

3.5 billion passengers boarded aeroplanes worldwide in 2015. All of them flew with airlines that rely daily on STAHLWILLE - because it would be difficult to find an airline who does not utilize a STAHLWILLE tool. In fact, many have opted for all-round tool solutions from STAHLWILLE for such critical fields as turbine maintenance.

3.5 BILLION RESPONSIBILITY

Safety first: an indispensable factor in air travel.

3.5 billion passengers boarded aeroplanes worldwide in 2015. All of them flew with airlines that rely daily on STAHLWILLE - because it would be difficult to find an airline who does not utilize a STAHLWILLE tool. In fact, many have opted for all-round tool solutions from STAHLWILLE for such critical fields as turbine maintenance.

Turbines: more than just an engine.

No part of an aeroplane contains more safety-critical bolted joints than the turbines. Their inner workings are extremely complex and have to withstand intense vibrations, high flow velocities, considerable pressures and harsh temperatures.

Accurate working procedures in awkward places are essential. Every tool also has to meet the special demands stipulated by the aerospace industry. Bolted joints have often seized. The very close tolerances of STAHLWILLE tools can make all the difference: they prevent damage to the fastener, which could otherwise cause expensive repair work. With conventional tools, frequent replacement is often necessary. STAHLWILLE tools, in contrast, offer far longer service lifetimes, make maintenance jobs faster and, in doing so, cut costs.

STAHLWILLE ratchets and wrenches, extensions, universal joints and sockets prevent loss of tools during work on turbines because the QuickRelease system locks all the parts together - from the worker's hand through to the fastener. In the same way, STAHLWILLE offers screwless tool construction, compliant with stringent FOD requirements.

An additional level of security is provided by the Tool Control System (TCS). Safety foam inlays with cut-outs in high-visibility colour simplify the task of tracking tools - a quick glance at the tray shows the service technician instantly if everything is where it should be.



200 METRES SAFETY

The energy sector: power connects.

Right from the production stage of wind turbines, STAHLWILLE supplies bespoke tools, developed jointly with turbine manufacturers. STAHLWILLE has developed torque wrenches, for example, programmed with customer-specific firmware and pre-configured joints. They guide the workers in the production facilities through the assembly process – fastener after fastener is tightened in compliance with this on-board checklist.

And as if that were not enough: power generators have to keep their equipment running more or less round the clock. As a result, maintenance has to be highly efficient and any downtime remedied in the shortest possible time. The tools in use in these demanding field jobs have to be not only extremely resilient, they must be dependable and work very precisely. This is why torque wrenches from STAHLWILLE are frequently found here.



200 METRES SAFETY

The energy sector: power connects.

Right from the production stage of wind turbines, STAHLWILLE supplies bespoke tools, developed jointly with turbine manufacturers. STAHLWILLE has developed torque wrenches, for example, programmed with customer-specific firmware and pre-configured joints. They guide the workers in the production facilities through the assembly process – fastener after fastener is tightened in compliance with this on-board checklist.

And as if that were not enough: power generators have to keep their equipment running more or less round the clock. As a result, maintenance has to be highly efficient and any downtime remedied in the shortest possible time. The tools in use in these demanding field jobs have to be not only extremely resilient, they must be dependable and work very precisely. This is why torque wrenches from STAHLWILLE are frequently found here.

Focussed on results – with no time to waste.

Scheduled maintenance of wind turbines occurs in a very restricted space. A full-featured yet compact and lightweight set of tools is an essential requirement because every unnecessary trip back to the van makes serious inroads into the time schedule and not every turbine has a lift.

For this reason, leading power generators rely heavily on bespoke tool compilations and kits made by STAHLWILLE – one of which is the MANOSKOP® 730 NII/65 mechanical torque wrench, which is also available with an extended torque range up to 1,000 N·m. This wrench is totally accurate, robust and suitable for life on the road. A special feature is the novel square drive insert socket system (22 mm x 28 mm) – providing greater versatility at high torque levels.





350 KPH AHEAD WITH FORESIGHT

A right pair: speed & safety.

Cars and railways get people from A to B very fast – and when things get tricky, it may be just a small fastener that decides whether everything stays on track or not. In any average car, there are from 1,500 to 3,000 threaded fasteners, and of these 300 are classified as Class A, which means safety-relevant. And as if that were not enough: trends towards using smaller components and new materials make special tool solutions a necessity.

350 KPH AHEAD WITH FORESIGHT

A right pair: speed & safety.

Cars and railways get people from A to B very fast - and when things get tricky, it may be just a small fastener that decides whether everything stays on track or not. In any average car, there are from 1,500 to 3,000 threaded fasteners, and of these 300 are classified as Class A, which means safety-relevant. And as if that were not enough: trends towards using smaller components and new materials make special tool solutions a necessity.

Tradition and the state-of-the-art: hand-in-glove.

Due to its involvement in many transport-related projects, STAHLWILLE is well aware of the special requirements applicable in this sector. For many years, we have been working together with vehicle manufacturers to develop solutions for efficient, safe working methods.

All-encompassing, customer-specific tool solutions and sets of tools made by STAHLWILLE are in use in production and maintenance and clock up bonus points for being lightweight, resistant to bending and having slim designs, whether it is spanners, sets of socket spanners or ratchets.

With our electronic torque and angle-controlled wrenches, STAHLWILLE is one of the first suppliers in the market to have grasped the importance of new production processes in the field of transport. Electronic torque and angle-controlled wrenches from STAHLWILLE are relied upon today wherever extremely accurate measurement and minimum deviation, intuitive operation and comprehensive documentation are required - for instance, in the safe tightening of aluminium fasteners in sensitive magnesium housings. It is, then, hardly surprising that leading German car manufacturers stipulate that STAHLWILLE tools have to be used for certain service jobs.



10,000 m³ SOLUTIONS

Industrial applications: not without STAHLWILLE.

However diverse industrial applications may be worldwide, professional users the world over agree on one thing: »Made in Germany« is epitomised by the brand name STAHLWILLE, because STAHLWILLE keeps pace with, and indeed drives, the many changes in this field by applying its future-looking knowledge of the market and engineering capability.

One such field is machine and plant engineering: here, latest-generation materials and constructions are causing installation spaces to shrink: this is where ergonomically designed, compact, lightweight tools from STAHLWILLE can really get to grips with the situation. As a result, leading enterprises around the world in the petrochemicals and printing industries supply their installations from the start with sets of tools and tool solutions made by STAHLWILLE - to ensure that, from day one, maintenance activities are performed using the best tools available.



10,000 m³ SOLUTIONS

Industrial applications: not without STAHLWILLE.

However diverse industrial applications may be worldwide, professional users the world over agree on one thing: »Made in Germany« is epitomised by the brand name STAHLWILLE, because STAHLWILLE keeps pace with, and indeed drives, the many changes in this field by applying its future-looking knowledge of the market and engineering capability.

One such field is machine and plant engineering: here, latest-generation materials and constructions are causing installation spaces to shrink: this is where ergonomically designed, compact, lightweight tools from STAHLWILLE can really get to grips with the situation. As a result, leading enterprises around the world in the petrochemicals and printing industries supply their installations from the start with sets of tools and tool solutions made by STAHLWILLE - to ensure that, from day one, maintenance activities are performed using the best tools available.

Diversity: the STAHLWILLE advantage.

In the manufacturing and capital-goods industries, preventive and corrective maintenance are of crucial importance. Installations and machines do not merely manufacture the required products. The machinery itself only pays for itself after a relatively long period. This makes the right choice of tools a key decision: tools that stand out as being of the highest quality and having the longest possible service lives, that allow service work to be carried out quickly and cost-effectively.

It is hardly surprising that STAHLWILLE's entire range of products can be found in such work environments: from the handy open-jaw spanner through to the state-of-the-art electromechanical torque wrench or a 40-kilogram striking face spanner with a jaw size of 210, as used on offshore drilling rigs, for example.





600 PERSONALITIES

Many people: one passion.

An enterprise aiming to imbue every individual process step with quality – from the first development step through to the finished product – needs one thing above all else: employees who will all pull in the same direction and live the brand's quality commitment. Those employees should have a feeling for market requirements, demonstrate creativity, develop customer-specific solutions that are off the beaten track. Employees have to be prepared to meet these challenges day after day: with a sense of responsibility blended with enjoyment of their work. Those employees are to be found at STAHLWILLE.

600 PERSONALITIES

Many people: one passion.

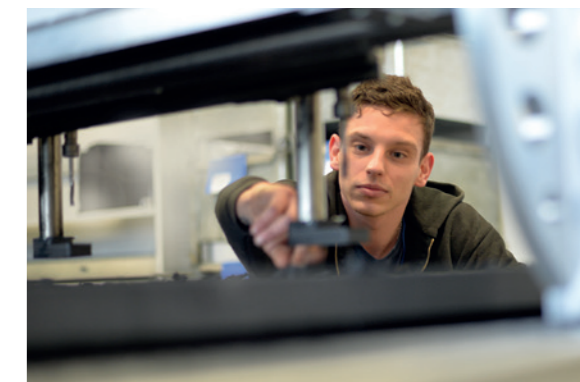
An enterprise aiming to imbue every individual process step with quality – from the first development step through to the finished product – needs one thing above all else: employees who will all pull in the same direction and live the brand's quality commitment. Those employees should have a feeling for market requirements, demonstrate creativity, develop customer-specific solutions that are off the beaten track. Employees have to be prepared to meet these challenges day after day: with a sense of responsibility blended with enjoyment of their work. Those employees are to be found at STAHLWILLE.

Accuracy: right from the start.

Many of today's production processes are completed today using computers and machines. But it is the men and women that develop, monitor and control the processes that are at the centre of these activities. Even in the age of digitisation, STAHLWILLE places great store by manual manufacturing techniques in Germany. In highly complex production processes, it is this approach that guarantees the outstanding quality that is characteristic of this brand. An excellent example of this is in the final assembly stages of torque wrenches – a sophisticated sequence of assembly operations requiring the utmost in concentration, attentiveness and dexterity.



Torque wrenches by STAHLWILLE – assembled by hand to meet and exceed the highest standards.



TCS inlays are exactly cut to size using a precision milling machine – for unerring fitting accuracy.

10 TONNES EVERY DAY

Delivered as agreed.

The STAHLWILLE logistics centre is responsible for ensuring that tools and complete tool solutions reach their intended destinations quickly and reliably. Tools with a total weight of more than 10 tonnes leave our warehouse daily, a total of around 70,000 items, distributed across more than 500 orders, all dispatched exactly on the appointed day by air, sea and road by our logistics team – as parcels, by forwarder, by air or sea-freight.

10 TONNES EVERY DAY

Delivered as agreed.

The STAHLWILLE logistics centre is responsible for ensuring that tools and complete tool solutions reach their intended destinations quickly and reliably. Tools with a total weight of more than 10 tonnes leave our warehouse daily, a total of around 70,000 items, distributed across more than 500 orders, all dispatched exactly on the appointed day by air, sea and road by our logistics team – as parcels, by forwarder, by air or sea-freight.

Quality delivered: confirmed by audits.

In the future, the demand for greater volumes of ever more individual tool solutions is set to continue – a trend for which STAHLWILLE's logistics team is already preparing itself. We have the latest in warehouse management systems and make all the standard input channels available for processing orders. Order picking and shipping preparations are subject to the strictest quality standards, and adherence to those standards is regularly monitored by means of internal quality audits.

Thanks to the visualisation system we developed in-house, all 60 of our employees in the logistics hub have direct access to details of scheduled orders and their current status – which means they are able to respond quickly and efficiently to urgent customer needs.



The quality of the packaging is also continually checked.



Picking and placing with the utmost care – a key step in order processing.

2020 VISIONARY

A clear view of the path ahead.

It is not difficult to set oneself ambitious goals - but achieving them is another matter. Reaching one's objectives is only a realistic possibility if the goals are authentic, if they are in harmony with company philosophy and if the path for getting there is evident to all. We at STAHLWILLE are aware of that - and have already set out on the journey into the future.



2020 VISIONARY



Dear readers,

The story of STAHLWILLE is one of people who share one common passion: we all feel the need to produce the best possible handtools money can buy. In this way, we have made it possible for professional end users to work more efficiently, more safely, more accurately and more easily than ever before. This pioneering spirit, the DNA of this enterprise, still guides us to this very day. This is what drives us.

STAHLWILLE knows the market. STAHLWILLE knows the customers, their production environments and processes. We understand the steadily increasing requirements of end users and this knowledge makes it possible for us to invent tools and tool solutions that provide real added value for our customers. It empowers us to develop an understanding of what tomorrow's tool solutions will look like.

We have always been able to integrate future-orientated technology at an early stage - whether in our production installations or our products, such as state-of-the-art torque wrenches which have, for some time, been equipped with electronic intelligence. Digital technology allows us to integrate new,

customer-relevant functionality that only ten years ago was difficult to visualise. In the same way, we intend to continue to set the pace without losing sight of the traditional tools that are key to our corporate identity.

One thing is absolutely certain: whatever tomorrow's tools look like, we will be developing them and manufacturing them in Germany. We are fully committed to this location, with no compromises. This location is the guarantee for the innovative approach and quality standard our customers deserve and expect.

You can look forward to some exciting new ideas in the future. You, as our customers, and we, the tool manufacturer, are jointly ready to embrace new ideas.

Your STAHLWILLE Management

Winfried Czilwa
Chief Executive Officer

Peter Mettlicki
Chief Financial Officer

2020
VISIONARY



»Two floors, one mission: the STAHLWILLE Kontor makes tools and torquing technology tangible.«

Heritage and the modern world united under one roof.
A training centre, information and meeting space, open to all customers and end users, has been created in the historic STAHLWILLE Kontor in Wuppertal-Cronenberg.

The traditional atmosphere of this time-honoured red-brick building has been carefully blended by STAHLWILLE with the latest in presentation technology

and contemporary comfort – bridging the past and the future. Spread over two floors, we have meeting areas and training facilities for events of all kinds – from trade congresses to further training. On the ground floor, visitors are greeted by three thematic islands which explain ergonomics and design, quality and function of STAHLWILLE products and demonstrate clearly the philosophy of quality that makes STAHLWILLE so different in comparison to the competition.



On the first floor, we have a hands-on display of STAHLWILLE products for you to get to grips with. This is where visitors discover the key aspects and the ideal handling of STAHLWILLE tools and can practice using them. The theory of torquing technology, application engineering and calibration technology are also explained in a hands-on manner. And last but not least, trade customers can visit a complete POS installation which enables us to emulate your own point-of-sale ideas realistically.